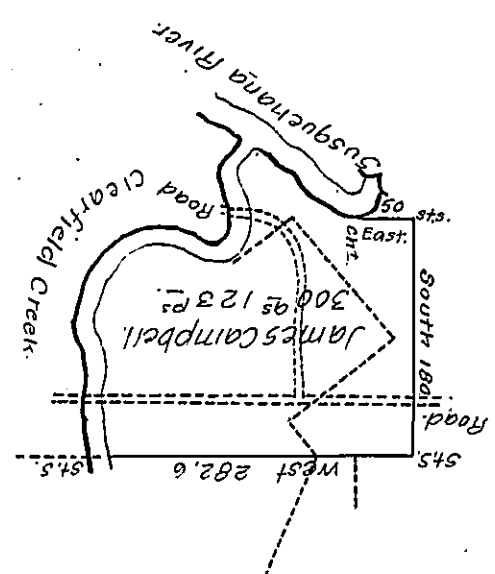


Courses and Distances up the river and Clearfield Creek From the CHZ.

- N. 56. W..... 105 to creek.
- S. 24. W..... 39 up crk.
- S. 10 E..... 52
- S. 63 W..... 20
- N. 70 W..... 58
- S. 85 W..... 61
- S. 2 W..... 157.3.
- 4923



Joseph Clark

Draught of a Tract of Land Situate in Bradford Township Clearfield County on the Clearfield Creek and the West Branch of the Susquehanna river Containing Three Hundred Acres one Hundred and twenty three Perches and the Usual Allowance of Six per Cent. for Roads &c Surveyed the 8th Day of Octoe 1828 in pursuance of an application No. 1633 Dated the 3rd of April 1769 Granted to James Campbell for 300 Acres.

To Gabriel Heister Esqr, David Ferguson. -
Surveyor General.

Note the dotted Lines represent the Interference of Robert Roberts Dated August 5th ~~December~~ 1773 Interference 200 ac. surveyed 29th of Novr 1775 Occupied by David Miller Partially surveyed being Part of a Body of Surveys.

Roberts part. D.F.

IN TESTIMONY that the above is a copy of the original remaining on file in the Department of Internal Affairs of Pennsylvania, made conformably to an Act of Assembly approved the 16th day of February, 1833, I have hereunto set my Hand and caused the Seal of said Department to be affixed at Harrisburg, this thirtieth day of September 1908.

Henry Howell
Secretary of Internal Affairs.